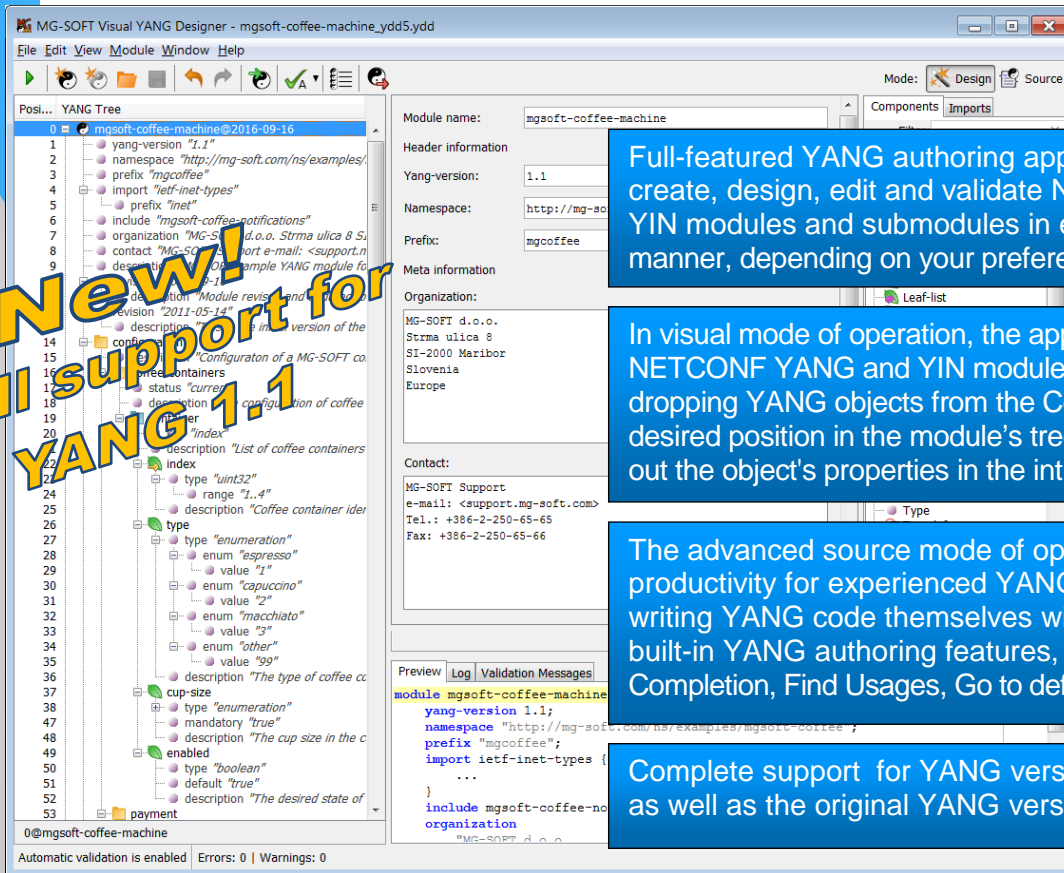




MG-SOFT VISUAL YANG DESIGNER



New!
Full support for
YANG 1.1

Full-featured YANG authoring application that lets you create, design, edit and validate NETCONF YANG and YIN modules and submodules in either visual or textual manner, depending on your preferences and experience.

In visual mode of operation, the application lets you design NETCONF YANG and YIN modules by simply dragging & dropping YANG objects from the Components panel to the desired position in the module's tree structure and by filling out the object's properties in the intuitive GUI.

The advanced source mode of operation boosts the productivity for experienced YANG authors who prefer writing YANG code themselves with convenience of the built-in YANG authoring features, like intelligent Code Completion, Find Usages, Go to definition, Find/Replace, etc.

Complete support for YANG version 1.1 (RFC 7950), as well as the original YANG version 1 (RFC 6020).

MG-SOFT VISUAL YANG DESIGNER – BASIC FACTS

- ❑ MG-SOFT Visual YANG Designer Professional Edition lets you create, design, edit and validate YANG and YIN modules in a visual manner, without having to master the YANG or YIN syntax.
- ❑ Visual YANG Designer lets you design and edit data models either by using the latest YANG data modeling language version 1.1 (RFC 7950), or by using the initial version of the YANG language (RFC 6020). In addition, the software lets you easily revise existing YANG version 1 modules and submodules and update them to YANG 1.1.
- ❑ In visual design mode, the software displays the structure of YANG modules in form of a hierarchical tree and the properties of each tree node can be set in the central part of the GUI.
- ❑ In addition to the visual design mode, the software features also an advanced source mode of operation, which incorporates a full-blown YANG source code editor that includes syntax coloring and intelligent code completion. You can switch between the visual and source mode at any time.
- ❑ The software incorporates a complete YANG consistency validation engine that ensures the produced YANG or YIN modules fully comply with the syntax and semantic rules defined in the YANG 1.1 specification (RFC 7950), or the YANG 1 specification (RFC 6020), depending on the version of YANG language used in the module.

MG-SOFT VISUAL YANG DESIGNER – MAIN FEATURES

- ❑ In visual design mode of operation, the application allows users to design and edit NETCONF YANG and YIN modules and submodules completely visually, by building a graphical tree model consisting of nodes representing YANG statements and setting the node attributes in the accompanying Node Properties panel. The latter contains GUI components for setting all the relevant property statements associated with a specific node type.

- ❑ One can visually build the YANG tree either by dragging & dropping YANG nodes (e.g., 'container', 'list', 'leaf', etc.) from the Components panel to the desired position in the YANG tree or by selecting the corresponding commands from the context menu directly in the YANG Tree panel.
- ❑ While building a YANG tree, the application automatically narrows down the list of valid components that can be added as sub-nodes to the currently selected node in the YANG tree. This increases productivity by making suitable nodes easier to find and helps you build a valid module tree structure.
- ❑ Another boost in productivity is guaranteed by the Node Properties panel in the central section of the application's GUI, which features the search-as-you-type filtering and word auto-completion while setting numerous YANG node properties, like 'type', 'base', 'uses', 'if-feature', 'import', 'include', 'belongs-to', 'unique', 'extended', 'key', 'path', 'augment', 'deviation', 'refine', etc. Furthermore, a description of every offered completion is displayed in a tooltip for better understanding of available options.
- ❑ In addition to the visual design mode, the software features also an advanced source mode of operation, which incorporates a full-blown YANG source code editor with syntax coloring and intelligent code completion feature. The source mode of operation boosts productivity for experienced YANG authors who prefer writing YANG code themselves with convenience of the built-in YANG authoring mechanisms, like code Auto-Complete, Find Usages, Go to Definitions, Find/Replace, etc. One can switch between the Design and Source mode of operation at any time and continue designing YANG module and submodules in the selected mode.
- ❑ Importing another YANG module and using or amending its statements is a breeze in Visual YANG Designer, as it requires only two clicks in Design mode or two lines of code in the Source mode of operation. Similarly, one can quickly and easily include a submodule into the main module. A complete collection of standard IETF YANG modules published in RFC documents comes bundled with the software.
- ❑ The built-in YANG validation engine thoroughly checks if the module you are editing fully complies with the syntax and semantic rules defined in the YANG 1.1 specification (RFC 7950), or the YANG 1 specification (RFC 6020), depending on the version of YANG language used in the module, submodules (if any) and imported modules (if any). The validation can be performed automatically after each edit or manually on user's request. All detected inconsistencies are displayed in the Output panel and all nodes (statements) that do not comply with the YANG specification are marked with an Error or Warning overlay icon. By double-clicking an Error or Warning message you can quickly go to and eliminate the inconsistency in YANG module.
- ❑ The "Go to Definition" and "Find Usages" commands let you quickly find referenced nodes in the main and imported modules. For example, by selecting a 'grouping' statement in the YANG tree and choosing the "Find Usages" command one can quickly find all 'uses' statements that reference the given 'grouping'. The application also tracks the Go-to-Definition action history, which can then be browsed backwards or forwards, as required.
- ❑ Visual YANG Designer actively assists you when writing YANG XPath expressions, such as 'must' and 'when' statement arguments. It can follow the paths in an XPath expression and offer completions for their continuation, much like those for a schema node identifier of an 'augment'.
- ❑ Visual YANG Designer can display the 'resolved' or 'final' YANG tree of the edited module and its imports. In the resolved tree the effects of expanded YANG statements are clearly visible, e.g., you can view the nodes inserted by the 'augment' statements and expanded 'uses' statements, as well as the modifications made to the YANG tree by the expanded 'deviation' and 'refine' statements, etc. This is useful because some errors are not apparent in the original statement tree, but become obvious in the resolved tree presented by Visual YANG Designer.
- ❑ The software keeps track of all actions and edits performed on the YANG module and submodules you are designing, so the actions can be quickly reverted or re-applied by clicking the Undo and Redo toolbar buttons or by using the corresponding shortcuts, respectively.
- ❑ Finished modules and submodules can be exported to either the native YANG format or to the XML-based YIN syntax format.
- ❑ MG-SOFT Visual YANG Designer has been designed and developed in Java™ and runs on MS Windows, Linux, Mac OS X and Solaris operating systems with Java runtime environment 1.7+.
- ❑ For more information please visit: <http://www.mg-soft.com/mgYangDesigner.html>



MG-SOFT d.o.o., Strma ulica 8, SI-2000 Maribor, Slovenia

+386 2 2506565 ☎ +386 2 2506566 📧 info@mg-soft.si 🌐 <http://www.mg-soft.si/>

Copyright © 1994-2017 MG-SOFT d.o.o. All rights reserved. Document v3, Printed in December 2016.