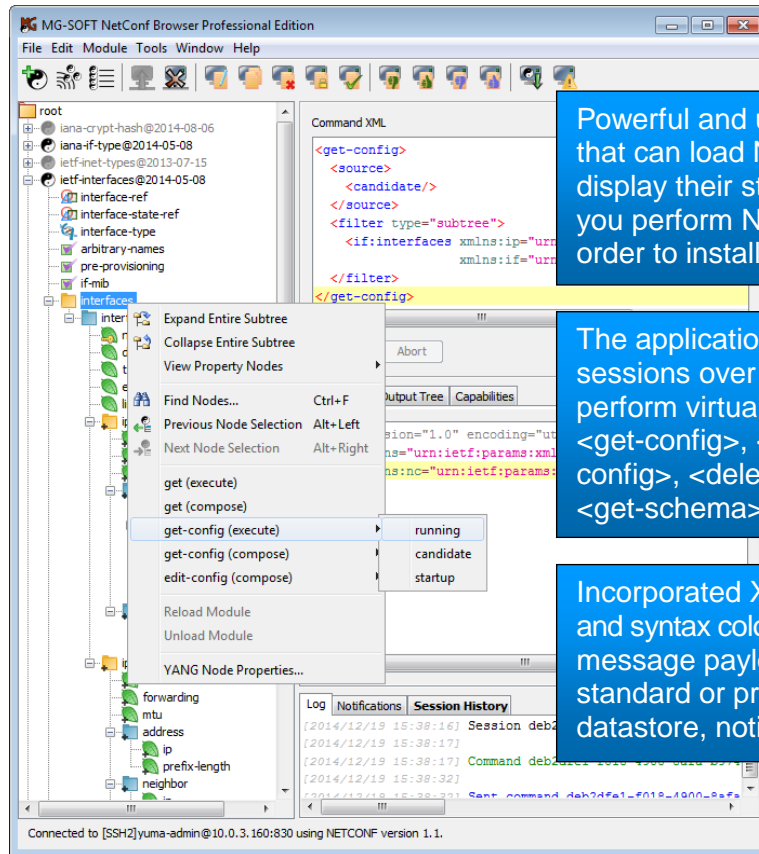


MG-SOFT NETCONF BROWSER



Powerful and user friendly NETCONF client application that can load NETCONF YANG and YIN modules, display their structure in form of a hierarchic tree and let you perform NETCONF operations on the tree nodes in order to install, modify or delete the device configuration.

The application lets you establish secure NETCONF sessions over SSH or TLS transport protocol and perform virtually all NETCONF operations, like <get>, <get-config>, <lock>, <unlock>, <edit-config>, <copy-config>, <delete-config>, <commit>, <cancel-commit>, <get-schema>, etc.

Incorporated XML document editor with auto-complete and syntax coloring lets you quickly create valid NETCONF message payloads and send them to the server (e.g., standard or proprietary RPCs, complete configuration datastore, notifications, ...).

MG-SOFT NETCONF BROWSER – BASIC FACTS

MG-SOFT NETCONF Browser Professional Edition is a powerful and user friendly NETCONF client application that lets you retrieve, modify, install and delete the configuration of any NETCONF enabled device in the network.

The software also lets you effectively monitor devices by retrieving NETCONF state data and receiving event notifications from devices.

The software lets you load any standard or vendor specific YANG or YIN module. Loaded YANG and YIN modules are shown in a hierarchical tree structure. User can perform NETCONF operations intuitively on the relevant YANG objects in the tree.

MG-SOFT NETCONF BROWSER – MAIN FEATURES

- ❑ Application has an intuitive user interface that lets you retrieve the device configuration and state data as well as modify the device configuration by using NETCONF v1.1 (RFC 6241) or NETCONF v1.0 (RFC 4741) protocol operations (<get>, <get-config>, <lock>, <unlock>, <edit-config>, <copy-config>, <delete-config>, <commit>, etc.).
- ❑ The software supports establishing NETCONF sessions over SSHv2 (RFC 6242, 4742) and TLS v1.2 (RFC 5539) secure transport protocols, which provide authentication, data integrity, encryption, and replay protection. The built-in certificate manager tool lets you effortlessly generate and manage X.509 digital certificates used for NETCONF over TLS and NETCONF over SSH communication with public key authentication mechanism.
- ❑ NetConf Browser can load any valid standard or vendor-specific YANG or YIN module and display its contents in a visual manner, where module elements are represented in a hierarchical tree structure, containing nodes on which NETCONF operations can be performed. NetConf Browser also checks the syntax and semantics of every YANG module it loads.

- ❑ Application automatically scans all new YANG and YIN modules for dependencies (imported and included modules) and lets you scan user-specified locations for the required modules. Complete information about the "registered" modules and submodules is automatically stored and presented in the Known Modules window. The latter lets you load modules that have many dependencies with a single click of a button, as well as keep and load different revisions of YANG modules.
- ❑ The hierarchy of nodes in the YANG tree can be fully explored and a special property page viewed for each node. The software expands the YANG statement tree defined in the modules into an actual schema tree. This means that all "uses" statements are replaced with appropriate "grouping" contents and "augment" targets actually contain the augmented nodes.
- ❑ Incorporated RFC 6110-compliant NETCONF Content Editor and Validator lets you easily compose any type of NETCONF XML document (e.g., a RPC request, configuration data, notification, etc.) and validate it against DSDL schemas generated from YANG modules. You can edit a NETCONF document either by using the full-fledged XML editor featuring intelligent code-completion or by using visual editor, where you simply right-click a node in the tree view and add/remove elements and set their values by choosing entries from the context menu. In addition, easy-to-understand validation messages let you quickly fix all syntax and semantic errors before sending the valid XML document to a NETCONF server, e.g., to apply a new configuration or perform any other NETCONF operation.
- ❑ In addition to the most common NETCONF operations that can be executed directly on YANG tree nodes (<get>, <get-config>, <edit-config>), the software provides a wealth of dedicated commands, buttons and dialog boxes that let you quickly and effectively perform other standard NETCONF operations, like <lock>, <unlock>, <copy-config>, <delete-config>, <commit>, <discard-changes>, etc.
- ❑ The software lets you easily perform the NETCONF v1.1 confirmed <commit> and <cancel-commit> operations by using the dedicated dialog boxes. The application allows you to quickly start a new confirmed <commit> operation and prolong or confirm an existing one.
- ❑ In addition to the standard NETCONF operations, the software lets you perform all proprietary operations defined as RPCs in private YANG modules defined by the vendors of NETCONF equipment. This makes it suitable for managing configurations of proprietary or non-standard NETCONF devices.
- ❑ The software lets you send the <create-subscription> message to the NETCONF server in order for NetConf Browser to subscribe to and receive asynchronous event notifications from it (as specified in RFC 5277). Received notifications can be viewed and managed in a dedicated tab in the main window.
- ❑ NetConf Browser supports the NETCONF <get-schema> operation (RFC 6022) that lets you download schema definitions (e.g., YANG and YIN modules) from remote NETCONF servers.
- ❑ The Session History tab in the main window contains a chronologically sorted list of all NETCONF sessions and RPC messages exchanged within these sessions. This feature allows you to quickly navigate through messages that were sent and received by NetConf Browser. NETCONF RPC messages are presented as formatted XML documents with syntax coloring. Depending on its type, a message may be copied, reused or edited. You can resend RPC messages or edit/check them in NETCONF Content Editor by simply choosing the corresponding command from the context menu
- ❑ A full collection of standard IETF YANG modules published in RFC documents come bundled with the software and are automatically loaded in NetConf Browser on first start.
- ❑ MG-SOFT NETCONF Browser Professional Edition has been designed and developed in Java™ and as such it runs on every OS with Java runtime environment 1.7+, for example, on MS Windows, Linux, Mac OS X and Solaris operating systems.
- ❑ For more information please visit: <http://www.mg-soft.com/mgNetConfBrowser.html>



MG-SOFT d.o.o., Strma ulica 8, SI-2000 Maribor, Slovenia

☎ +386 2 2506565 ☎ +386 2 2506566 ✉ info@mg-soft.si 🌐 <http://www.mg-soft.si/>

Copyright © 1994-2015 MG-SOFT d.o.o. All rights reserved. Document version 2, Printed in February 2015.